

Modeshift Corporate/Third Sector Membership 2022/23



Modeshift

Modeshift (now incorporating Act TravelWise) is a not-for-profit membership organisation that exists to increase levels of active and sustainable travel in business, education, and community settings. Over 800 industry professionals are registered with Modeshift representing the public, private, voluntary and third sectors.

Modeshift works to raise standards of industry delivery, including establishing a national standard for Travel Plans, sharing best practice, and recognising excellence amongst its Members, Partners, and Supporters.

Act TravelWise

In March 2022, Act TravelWise members voted for the organisation to merge with Modeshift. As of April 2022, Act TravelWise members became members of Modeshift, although they still have access to the same membership benefits that they previously received. In addition, they also now have access to a range of other Modeshift services.



Act TravelWise

Join Team Modeshift Today!

By becoming a Modeshift Corporate/Third Sector member, your organisation will receive all of the



services previously provided by Act TravelWise membership, which will now be delivered by Modeshift, as well as a range of other benefits.

A Member of Team Modeshift is any individual who in some way may have an impact on how people choose to travel. The key is that we all work together to achieve our shared aims and objectives.

Over 4,000 organisations and their staff, students, customers are already a part of the Team Modeshift network. Join today and help us to make a significant contribution to increasing levels of sustainable and active travel.

Modeshift
Corporate/
Third Sector
Membership Fees
2022/23
From £250



Corporate/Third Sector Membership Benefits

Act TravelWise Exclusive Benefits:

- ★ One fully-inclusive space at the 1-day Act TravelWise Conference
- ★ Participation in and online resources for TravelWise Week (European Mobility Week), held in late September every year
- ★ Opportunities to nominate people/projects for the National TravelWise Week Awards
- ★ Opportunities to take part in and present at webinars as part of the Act TravelWise Webinar Series
- ★ Opportunity to network and share experience with like-minded organisations
- ★ Access to recordings of previous Act TravelWise webinars/presentations

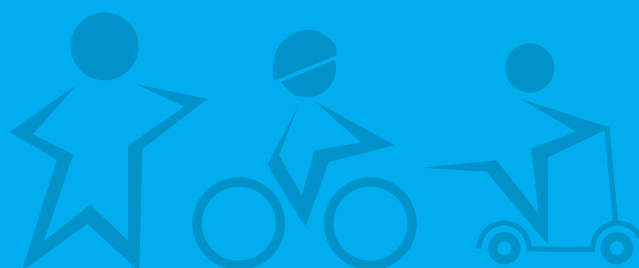
Additional Modeshift Membership Benefits:

- ★ Regional networking and information sharing activities (2 per region, per year)
- ★ Access for all members of staff to the Modeshift Member's website, including the Member's Forum, case studies and resources
- ★ Weekly 'Modeshift Matters' news digest
- ★ Opportunity to sponsor the Modeshift National Sustainable Travel Awards
- ★ Opportunities to nominate people/projects for the Modeshift National Sustainable Travel Awards
- ★ Free job advertising through 'Modeshift Matters' and the Modeshift Member's website
- ★ Free access to the Modeshift STARS Business system to develop your organisation's Travel Plan (one site only), plus eligibility to purchase Modeshift STARS licences.
- ★ Opportunities to present at and contribute to Modeshift events
- ★ Discounted delegate spaces for Modeshift events and training
- ★ Discounted products and services from Modeshift Partners

Modeshift Corporate/Third Sector Membership Fees

| Modeshift Corporate Membership Type | Annual Fees | |
|--|--|----------------|
| | Third Sector (NHS/ Education/not-for-profit) | Private Sector |
| Social Enterprise/Small (1-4 staff) | | £250.00 |
| Medium organisation (5-50 staff) | £250.00 | £375.00 |
| Large organisation (51+ staff) | | £495.00 |
| Optional Extras | Fees | VAT |
| Annual Modeshift Convention Delegate Places | £250.00 | n/a |
| Modeshift STARS Corporate Licence | £349.00 | £69.80 |
| Additional site on Modeshift STARS (organisation's own Travel Plans) | £100.00 | £20.00 |
| Online STARS System Training | £250.00 | £50.00 |

Modeshift STARS Consultancy Licence (fee per site - £300 (plus VAT for first 10 sites in Partnership year, £150 (plus VAT) per site thereafter)



For more information regarding Modeshift and its services please use the contact details below:

E: admin@modeshift.org.uk

www.modeshift.org.uk